



**New Jersey
New York State
Pennsylvania**



**EAST
COAST
GREEN
CONFERENCE**

**EAST COAST GREEN VIRTUAL 2-DAY CONFERENCE
FRIDAY, APRIL 22, 2022 AND SATURDAY, APRIL 23, 2022**

Now, more than ever, the connection between wellness and our environment is critical to understand, communicate and align in our designs and buildings. The pandemic has brought the vulnerability of our health and environment to the forefront of the conversation. We have seen air and water quality notably improve during times of reduced human activity. This eliminates any doubt that our typical lifestyle behavior has a lasting and substantial impact on our environment. The American Institute of Architects New Jersey, New York State, and Pennsylvania Chapters of the Committee on the Environment have created the East Coast Green Conference to bring together professionals from numerous industry segments to discuss the future of design in an age where wellness and climate change demand equal attention. East Coast Green presents some of the most prominent regional players in sustainability, to speak on a wide variety of topics of interest to the design and construction industry.

Register Here <https://conx.is/ecg22>

Saturday, April 23rd Sessions

all times listed are in Eastern Daylight Time



**9:30am - 11:00am
Keynote Speaker**

**COP26 findings and the
Big Picture for Adaptive Reuse
with Carl Elefante, FAIA**

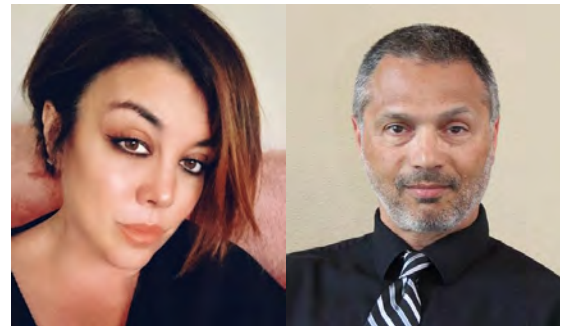
11:00am - 12:15pm

**NJSBA STEAM Tank -
A Powerful Design Challenge
to Engage Creativity and
Entrepreneurism with John Henry,
LEED GA and Jennifer Siehl**



11:00am - 12:15pm

**Custom Residential Design Trends
Blended with High-Performance
Strategies with Peter L Pfeiffer,
FAIA and Alan K Barley, AIA**



12:45pm - 2:00pm

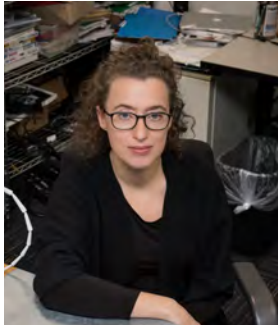
**The Business Case for
Resilience with Illya Azaroff, AIA**



APPROVED FOR 1 HSW CREDIT

Saturday, April 23rd Sessions

all times listed are in Eastern Daylight Time



12:45pm - 2:00pm

The Edge Effect - Design at the intersection of Habitats with Martina Decker, Associate Professor, New Jersey Institute of Technology

2:00pm - 3:15pm

The Effects of Climate Change Migration in El Paso with Ersela Krippa and Stephen Mueller from Agency

2:00pm - 3:15pm

PH Design - Passive Haus and Retrofit NY Industrialized High Performing Retrofits with Justin Taylor



3:15pm - 4:30pm

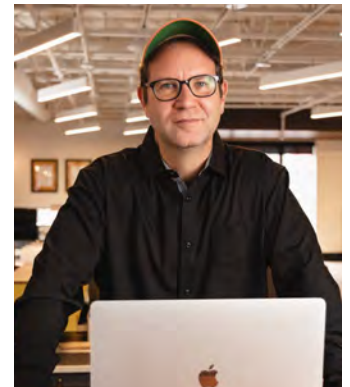
Prevention and Preparedness: Strategies for Putting Health First with Joelle Jach from IWBI

APPROVED FOR 1 WELL and GBCI CREDIT

3:15pm - 4:30pm

The Building Science Behind the Bubble Wrap House with Michael Ermann, AIA

APPROVED FOR 1 HSW CREDIT



SPECIAL THANK YOU TO OUR SPONSORS



NEW JERSEY

